

## VOLUNTEER FAQs

Volunteer as an individual or family by putting love into Stewart Park (1702 24<sup>th</sup> Street). This one-day community project will focus on installing a crushed granite trail and planting trees. All equipment and training will be provided. Bring your excitement and willingness to get to work!

### VOLUNTEER GUIDELINES

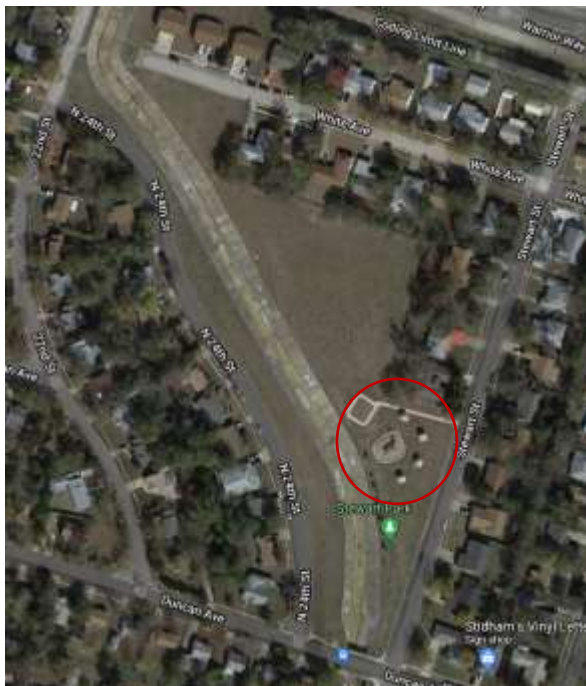
#### *VOLUNTEER DO'S*

- **Do contact Yalondra Valderrama-Santana** at [yvalderrama-santana@killeentexas.gov](mailto:yvalderrama-santana@killeentexas.gov) before July 1 to sign up to volunteer
- **Do fill out the Liability Waiver** and turn in on time. All volunteers must complete/submit the form
- **Meet up at the playground in Stewart Park.** An event volunteer will be there to guide you
- **Do park your vehicle** on White Ave, Stewart St., N. 24th Street. Please avoid parking in front of homes
- **Do wear clothes you can get dirty.** Long pants and closed-toe shoes or boots for safety reasons
- **Bring sunscreen** and hats are recommended
- **Do bring water to stay hydrated.** Water will also be provided
- **Do stay with your group while volunteering.** All children under the age of 12 will need to be accompanied by an adult

#### *VOLUNTEER DON'TS*

- **Do not walk in front of moving heavy equipment**
- **Do not take off your safety vest**

#### *LOCATION*



Thank you to our sponsors:

